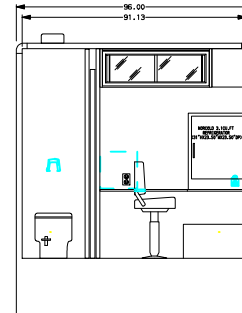
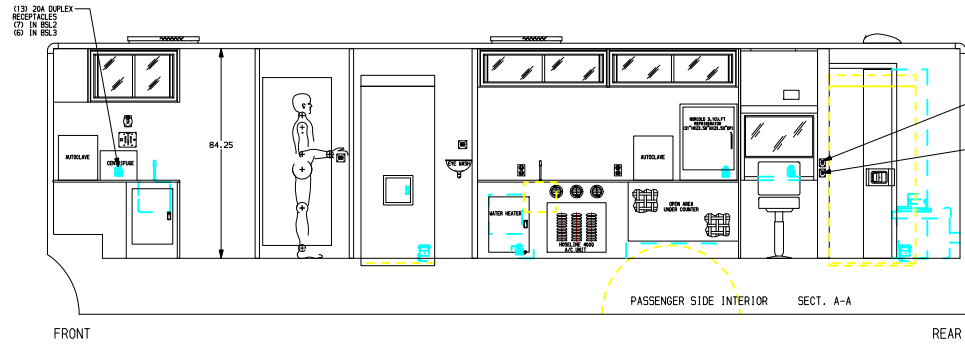
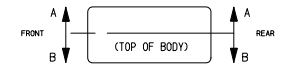
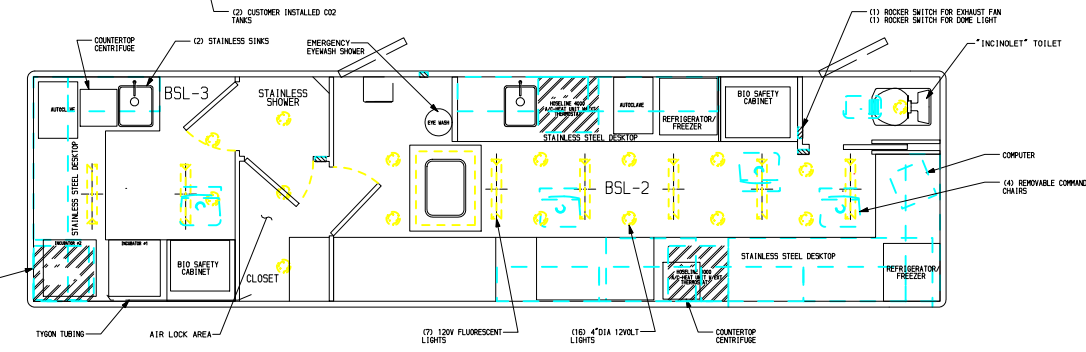


VIEW FORWARD FROM REAR OF TRUCK



VIEW REARWARD FROM FRONT OF TRUCK

NOTE
DIMENSIONS SHOWN ARE APPROXIMATE AND ARE SUBJECT TO MINOR DEVIATIONS AS MAY OCCUR OR BE NECESSARY IN CONSTRUCTION.
MINOR DETAILS NOT SHOWN.

- NOTES:**
1. INTERIOR WALKWAY SIDES, CEILING, AND UPPER SIDE WALLS COVERED WITH BRUSHED STAINLESS STEEL
 2. LINEAR VINYL FLOOR WITH 4" HIGH KICK PLATE
 3. DESKTOPS TO BE COVERED WITH STAINLESS STEEL
 4. LAB EQUIPMENT LABELED NOT SUPPLIED BY PIERCE

				CHASSIS DATA	TITLE	HEAVY DUTY RESCUE WALKIN	JOB NO.	16530
✓	08NOV05	AZU	-	CHASSIS	FOR	VITAL PROBES	DATE	SCALE 1 : 24
✓	07JUN05	DHE	TYH	-		MMTL CONCEPT VEHICLE	28NOV04	DRAWN BY DHE
✓	24MAY05	DHE	AZU	MODEL	DRWG. NO.	16530AD-SH2	18DEC04	CHK'D BY KWI
REV.	DATE	BY	CHK'D	-			SHEET NO.	SHEET SIZE
							2 of 2	D

Pierce MANUFACTURING INC.
APPLETON, WISCONSIN