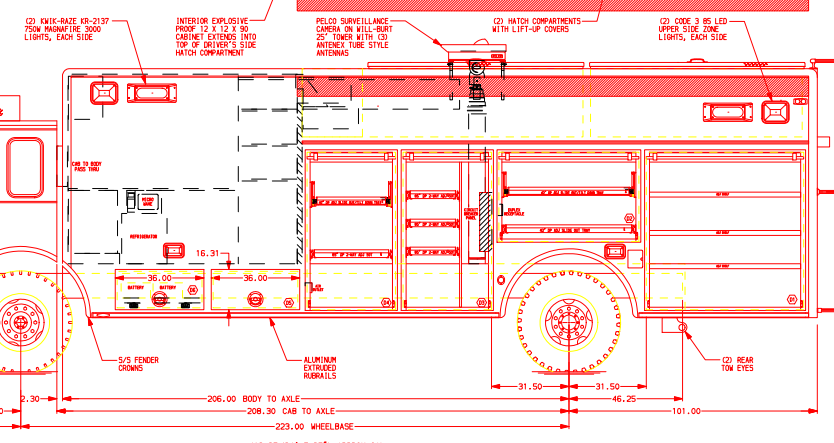
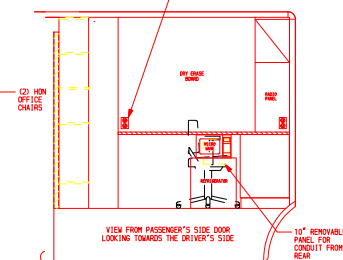
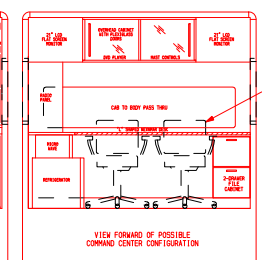
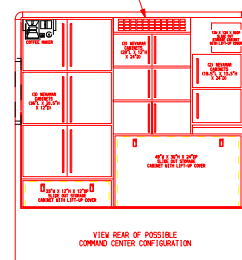
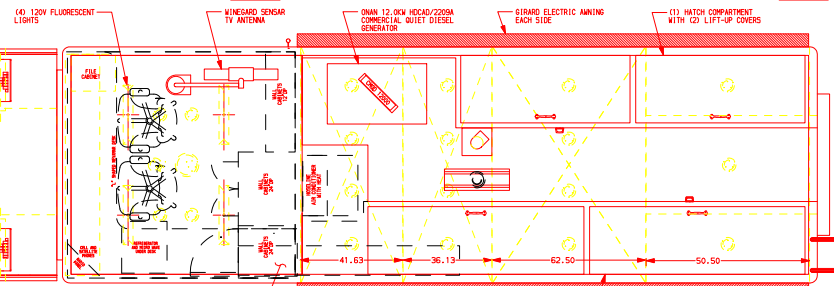
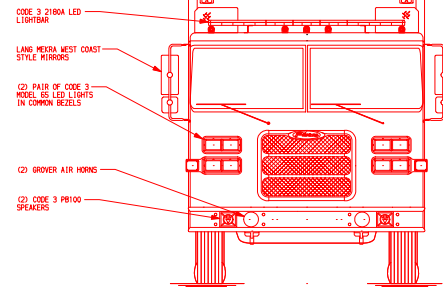
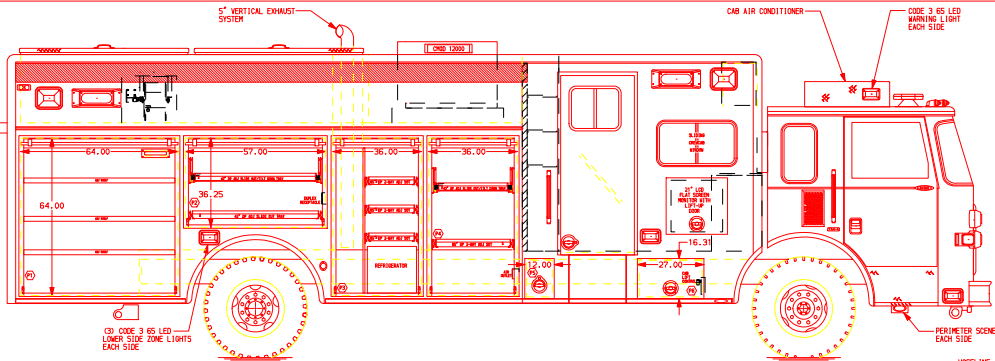


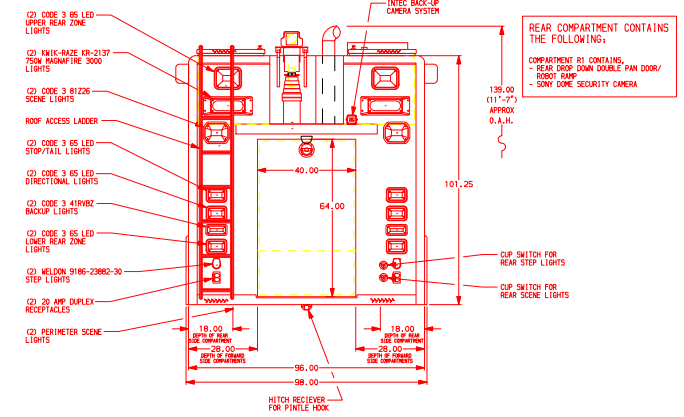
**PASSENGER'S SIDE COMPARTMENTS CONTAIN THE FOLLOWING:**

- COMPARTMENT P1 CONTAINS:
  - (1) LOW PRESSURE AIR REEL WITH 150' OF HOSE
  - (2) ADJUSTABLE SHELVES
- COMPARTMENT P2 CONTAINS:
  - (1) 42" DP ADJ SLIDE OUT TRAY
  - (1) 20 AMP DUPLEX RECEPTACLE
  - (1) 42" DP ADJ SLIDE OUT/TILT DOWN TRAY
- COMPARTMENT P3 CONTAINS:
  - (1) 40" TWO WAY SLIDE OUT TRAYS
  - (1) VERTICAL COMPARTMENT DIVIDER
  - (1) 6" REFRIGERATOR
- COMPARTMENT P4 CONTAINS:
  - (1) 40" TWO WAY SLIDE OUT TRAY
  - (1) 42" DP ADJ SLIDE OUT/TILT DOWN TRAY
  - (1) AIR OUTLET WITH SHUT OFF VALVE
- COMPARTMENT P5 CONTAINS:
  - (1) CAB LIFT CONTROLS
  - (1) AIR TOOL OUTLET



**DRIVER'S SIDE COMPARTMENTS CONTAIN THE FOLLOWING:**

- COMPARTMENT D1 CONTAINS:
  - (3) ADJUSTABLE SHELVES
- COMPARTMENT D2 CONTAINS:
  - (1) 42" DP ADJ SLIDE OUT TRAY
  - (1) 20 AMP DUPLEX RECEPTACLE
  - (1) 42" DP ADJ SLIDE OUT/TILT DOWN TRAY
- COMPARTMENT D3 CONTAINS:
  - (1) 40" TWO WAY SLIDE OUT TRAYS
  - (1) VERTICAL COMPARTMENT DIVIDER
  - (1) CIRCUIT BREAKER PANEL
  - (1) WILL-BURT 25" CAMERA MAST TOWER
- COMPARTMENT D4 CONTAINS:
  - (1) 40" TWO WAY SLIDE OUT TRAY
  - (1) 42" DP ADJ SLIDE OUT/TILT DOWN TRAY
  - (1) AIR OUTLET WITH SHUT OFF VALVE
- COMPARTMENT D5 CONTAINS:
  - (1) CAB LIFT CONTROLS
  - (1) AIR TOOL OUTLET



**NOTE**  
DIMENSIONS SHOWN ARE APPROXIMATE AND ARE SUBJECT TO MINOR DEVIATIONS AS MAY OCCUR OR BE NECESSARY IN CONSTRUCTION.  
MINOR DETAILS NOT SHOWN.

- NOTES:**
- BROTHER MFC3000 FAX MACHINE IN COMMAND AREA
  - METZLER LOG DESK ACT IN COMMAND AREA
  - ANTENNA MOUNT FOR TWO WAY RADIO LOCATED PER SHOP ORDER
  - SECURITY SECURITY CAB ALARM FOR CAB AND BODY
  - QUALCOMM 1600 SATELLITE PHONE SYSTEM IN COMMAND AREA
  - TELLER ONE ONE DIGITAL ANALOG PHONE CELL IN COMMAND AREA
  - PANASONIC DVD-RECORDING RECORDER IN COMMAND AREA
  - 2' CONSULT FROM COMMAND DESK TO REAR COMPARTMENT ADJACENT TO ROBOT ON DRIVER'S SIDE

16JUN05	DHE	KWI	CHASSIS
20MAY05	JAU	KWT	DATA
01JUN05	AZI	TSH	CHASSIS
10SEP05	AZI	TSH	PIERCE
02JUN05	AZI	MAU	MODEL
REV.	DATE	BY	CHK'D BY

**Pierce MANUFACTURING INC.**  
APPLETON, WISCONSIN

**JOB NO. 17068**

**TITLE** HEAVY DUTY RESCUE  
NON-WALK-IN  
FOR LOS ANGELES POLICE DEPARTMENT (BOMB SQUAD)  
LOS ANGELES, CA.

**DATE** 16MAY05  
01JUN05

**SCALE** 1:24  
**DESIGN BY** AZU  
**CHK'D BY** MXA

**DWG. NO.** 17068AD

**SHEET NO.** 1 of 1  
**SHEET SIZE** D