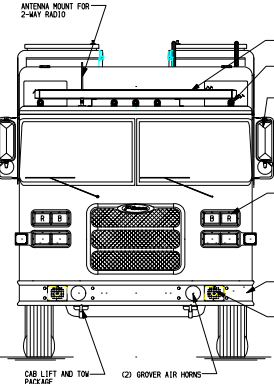
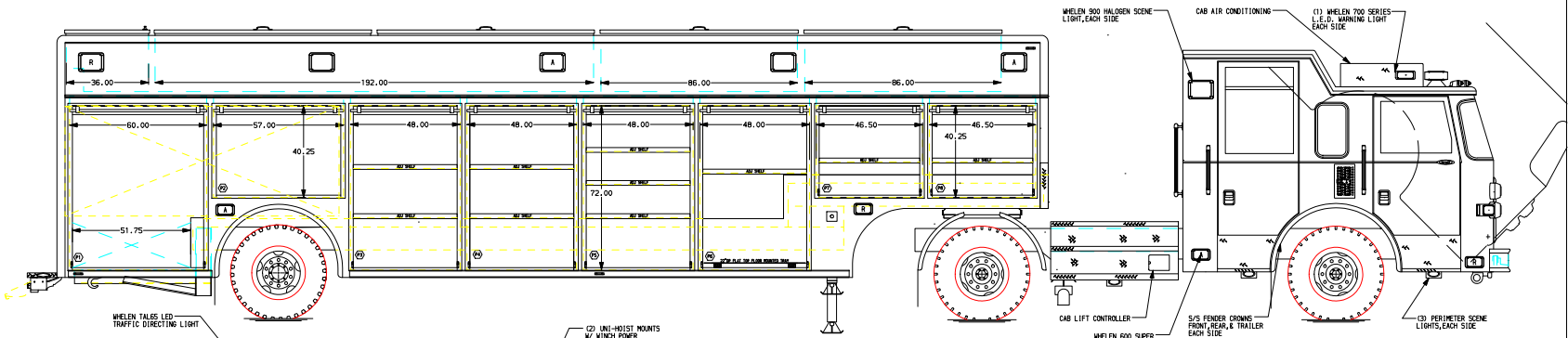


**PASSENGER'S SIDE COMPARTMENTS CONTAIN THE FOLLOWING:**

- COMPARTMENT P1 CONTAINS: (1) 42" DP ADJ SHELF
- COMPARTMENT P2 CONTAINS: (1) 42" DP ADJ SHELF
- COMPARTMENT P3 CONTAINS: (2) 42" DP ADJ SHELVES
- COMPARTMENT P4 CONTAINS: (2) 42" DP ADJ SHELVES
- COMPARTMENT P5 CONTAINS: (3) 42" DP ADJ SHELVES
- COMPARTMENT P6 CONTAINS: (1) 42" DP ADJ SHELF (1) 22" DP FLAT TOP FLOOR MOUNTED TRAY



**DRIVER'S SIDE COMPARTMENTS CONTAIN THE FOLLOWING:**

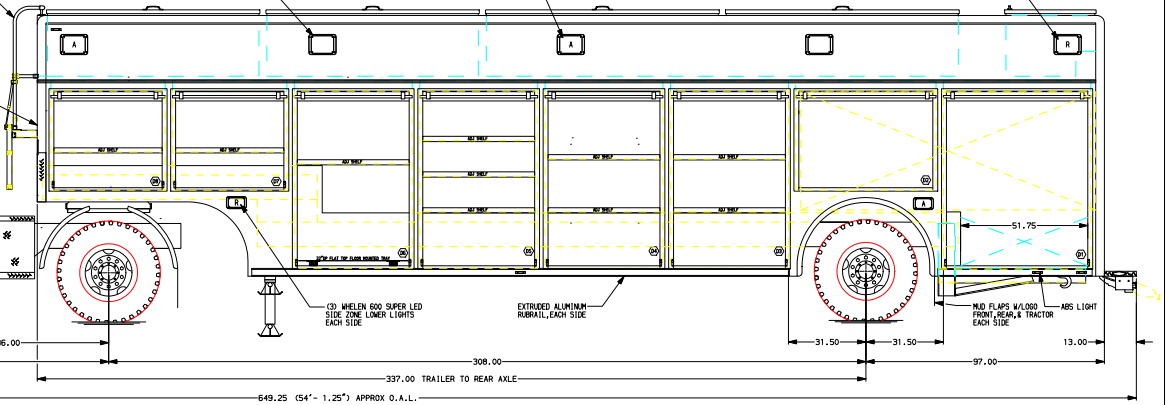
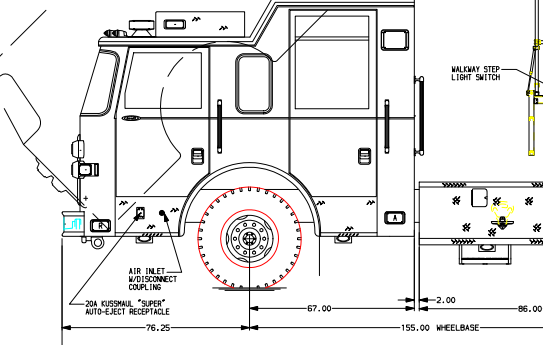
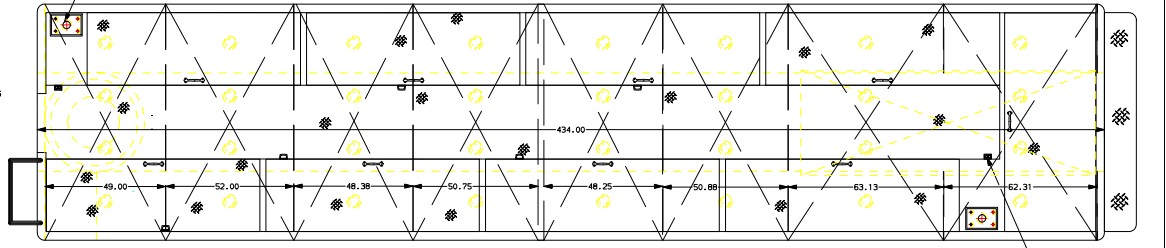
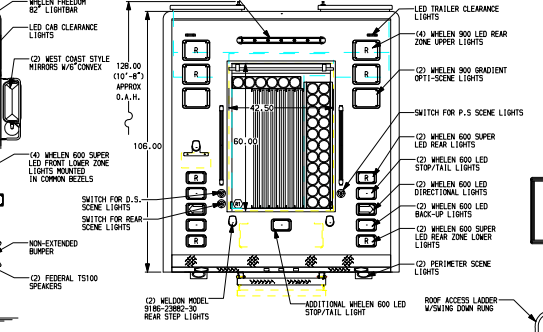
- COMPARTMENT D1 CONTAINS:
- COMPARTMENT D2 CONTAINS:
- COMPARTMENT D3 CONTAINS: (2) 42" DP ADJ SHELVES
- COMPARTMENT D4 CONTAINS: (2) 42" DP ADJ SHELVES
- COMPARTMENT D5 CONTAINS: (2) 42" DP ADJ SHELVES
- COMPARTMENT D6 CONTAINS: (1) 42" DP ADJ SHELF (1) 22" DP FLAT TOP FLOOR MOUNTED TRAY
- COMPARTMENT D7 CONTAINS: (1) 42" DP ADJ SHELF
- COMPARTMENT D8 CONTAINS: (1) 42" DP ADJ SHELF

**REAR COMPARTMENT CONTAINS THE FOLLOWING:**

- COMPARTMENT R1 CONTAINS: (1) BACK FOR 12 SHEETS OF PLYWOOD (1) RACK OF 22 PVC TUBES 4"D X 120" L (1) RACK OF 6 PVC TUBES 4"D X 120" L

**NOTE**  
DIMENSIONS SHOWN ARE APPROXIMATE AND ARE SUBJECT TO MINOR DEVIATIONS AS MAY OCCUR OR BE NECESSARY IN CONSTRUCTION.  
MINOR DETAILS NOT SHOWN.

- NOTES:**
1. CAB AND CREW CAB TO HAVE PADDED RUBBER FLOOR
  2. CREW CAB TO HAVE STATIONARY REAR WINDOWS
  3. KESONAL AND CHARGE 1200 LOCATED IN SEAT BOX
  4. STOP/TAIL, DIRECTIONAL, AND BACK-UP LIGHTS ON BACK OF TRACTOR OR ON BACK OF CAB AND REAR FENDER AND FLOOR AREA
  5. WHELEN 600 HALOGEN SCENE LIGHTS ON BACK OF CAB



<b>Pierce</b> MANUFACTURING INC. APPLETON, WISCONSIN		JOB NO. 16752
TITLE RESCUE TRACTOR TRAILER		SCALE 1:24
FOR HOUSTON FIRE DEPARTMENT, TACTICAL RESCUE VEHICLE		DATE 25-JAN-05
HOUSTON, TEXAS		DRAWN BY DHE
REV. DATE BY CHK'D	02FEB05 DHE SBR MODEL AXG216	CHK'D BY KWI
DWG. NO. 16752AD		SHEET NO. 1 OF 1